

IMPACT Lux

NEW

The perfect all-around solution
for the modern classroom

Featuring high precision technology, LYNX Whiteboard and
Cleverstore – IMPACT Lux helps save time lesson planning with
lots of resources and learning activities.

NEW

Antibacterial glass

Keep germs at bay with
state-of-the-art micro
antibacterial glass.



NEW

EDLA Certified

Access the Google
Play Store and Google
Workplace, along with
the full Microsoft 365
suite, directly from the
screen. Use apps such
as Google Drive, Docs,
Sheets, Slides, Teams,
Word and PowerPoint.

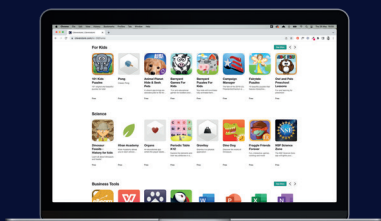
NEW

**Any Screen,
Any Time**

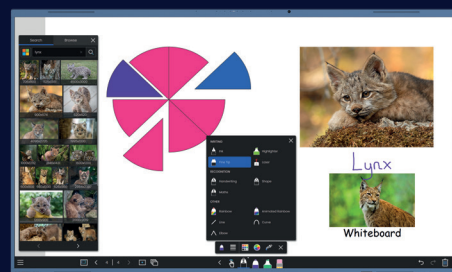
With integrated NFC,
users can simply
swipe their fob, card
or device to load their
personal profile on any
Clevertouch anywhere in
the world.

Available in a range of sizes
65" 4K | 75" 4K | 86" 4K

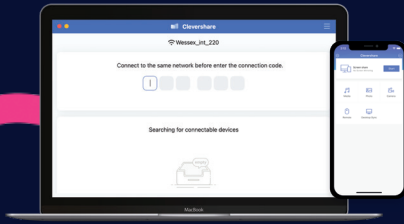
Software included at no extra cost



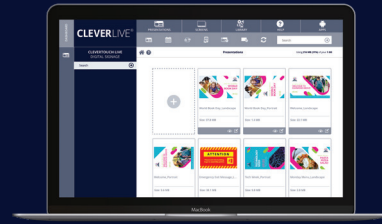
Choose from hundreds of apps at no extra cost. Cleverstore
has apps in multiple languages and for all age groups and
subjects. No adverts, no in-app purchases, no hassle.



LYNX Whiteboard is a free-to-use lesson building app,
enabling student collaboration. The most dynamic,
intuitive user experience of any whiteboard



Any device can download the Clevershare app and connect instantly by typing in the code on the Clevertouch screen. Clevershare App is free to download and compatible with Android, Windows, iOS, and Chrome devices.



CleverLive is a cloud digital signage content management platform which connects all your Clevertouch products enabling broadcasting of messages, announcements and alerts. Use editable templates or create your own presentation and deploy them across any number of screens, on any number of sites, anywhere in the world.

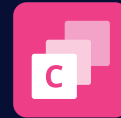
Key Features



Designed for blended learning



LYNX Whiteboard lesson creation app



Cleverstore free app store



Clevershare screen mirroring



Remote management MDM



Customise your home screen



Award winning interactive display



Compatible with Google Classroom and Microsoft 365

What's New?



Anti Bacterial Glass



HPIR Touch Frame, Palm Rejection



Top Mounted USB-C and USB-C Out



Integrated NFC/RFID



Google Enterprise Partner



8GB Ram & 128GB ROM



Android 13



2x 20w front facing
2x 10w sub woofer

IMPACT Lux Specifications

Display Panel

Diagonal Size	65" 4K, 75" 4K, 86" 4K
Screen Type	LCD
Aspect Ratio	16:9
Display Colours	1.07 Billion (10 bit)
Resolution	4K UHD (3840x2160)
Response Time	5ms
Refresh Rate	60Hz
LCD Viewing Angle	178°
Brightness	500 cd/m2
Contrast Ratio	4000:1
Dynamic Contrast Ratio	6000:1
Glass Hardness	AG Tempered Glass - Mohs Level 7
Glass Thickness	3mm
NEW Glass Type	Low Parallax 0mm Air Gap - Heat tempered - Anti Glare & Anti Smudge for durability - Super Glide Surface
NEW Antibacterial Glass	Yes
NEW Antibacterial Power Button	Yes
Main Board	RK3588
Life of Screen	50,000 Hours
NTSC	72%

Interactivity

Writing Technology	High Precision IR Technology + Material Classification Sensor
NEW Continuous Touch Points	50
Touch Resolution	32768x32768px
Response Time	≤5ms
Touch Accuracy	±1mm
Minimum Object Size	2mm
Touch Tool	Finger, passive pen, opaque objects
Simultaneous Writing	Yes
Ink In Tools	Yes - LYNX
Pens Included	2
NEW Pen Type	Dual Recognition Stylus Super Cool Stylus 2.0
Pen Holder	Integrated magnetic pen holders
Pen Tip Diameter	3mm/7mm
Pen & Touch Differentiation	Yes
Pen Identities	2
Palm Rejection	Yes
Annotation Over Any Source	Yes
Classroom Essential Apps	Includes Whiteboard, Annotate, Timer, Media Players, Browser, PDF Reader, Screen Record, Spinner, Voting, Maths Tools
Compatibility*	Windows 10, Linux, Mac, Android, Chrome
Tracking Rate	≥1m/s
Scan Rate	≥100hz
Gestures & Edge Swipes	Windows Supported, OSX With additional Driver

Connectivity

OPS Slot	1 - Intel Spec 80Pin
HDMI In	3
HDMI Out	1
USB-A 2.0	3
USB Touch (type B)	3
NEW USB A 3.0 (faster data transfer)	2 x USB Front Type A 3.0 with faster data transfer 2 x USB Side Type A 3.0 with faster data transfer
NEW USB C (Video, Audio & Touch)	1 x USB Side Type C with video, audio, touch & network 1 x USB Front Type C with video, audio, touch, network, and 100W charging
NEW USB C (Data Transfer)	1 x USB Top Type C Supports data transfer for top mounted camera
NEW USB C Out	1 x USB Type C Out with video, audio, touch and network
Display Port In	1
LAN In (RJ45)	1
LAN Out (RJ45)	1
RS-232	Yes
Wake-on-Lan	Yes
Wireless Adapter	2.0 + WAP
Clevertouch WiFi Module	Yes
Bluetooth	Yes - 5.2
Audio In	1 (3.5mm)
Optical Out	1 (coax)
Headphone	1 (3.5mm)
Total touch out ports	3
NFC Reader / Writer	Integrated
Camera	Optional Extra
Proximity Sensor	Yes
NEW WiFi	IEEE 802.11a/b/g/n/ac/ax with 2 x 2 MIMO (hotspot only) (both 2.4 and 5 GHz bands)
NEW WiFi Speed	Capable of speeds up to 1GB

Computing

NEW Operating System	Android 13
NEW System Version	Lux 13
NEW RAM	8GB
NEW Internal Storage	128GB
CPU	Quad Core A76 + Quad Core A55
GPU	Mali G610 MC4
Android Resolution	4K
Integrated Lux UI	Yes
NEW System Architecture	64-bit
NEW Google Certification	EDLA Certified (Enterprise Device Licence Agreement)
NEW Access to Google Playstore Apps	Yes (certified)
NEW Access to Microsoft Apps	Yes (certified)
NEW Access to Google Cloud Services	Yes (certified)

IMPACT Lux Specifications

Power

Power Requirements	100 - 240 ~ 50/60Hz 3.5A
Power Consumption (Normal)	65" 117W 75" 145W 86" 168W
Power Consumption (Standby)	≤0.5W
Ultra Quiet Fanless Design	Yes

Operating & Storage Environment

Operating Temperature	0° to 40°
Storage Temperature	-20° to 60°
Operating Humidity	10% to 90% RH
Storage Humidity	10% to 90% RH
Altitude	Below 5000 metres

Audio

NEW Dual Front Facing, Bass Enhanced Speakers	2 x 20W Front Facing + 2x 10W Subwoofer
Audio Out	Yes
SPDIF / Fibre	Yes
Sound Channel	2.2
Line Array Microphone (noise cancelling)	8-array
Super Wide Sound	Yes

IMPACT Lux Built-In Features

LYNX™ App With Online Lesson Planning	Yes
Cleverstore™ App Store For Education	Yes
Embedded Digital Signage	Yes
Clevershare™ Mirroring Any Device To The Board	Free for the life of the screen (touch back)
Integrated Personalised Account Profiles	Yes
Cloud Account Access	OneDrive, Google Drive, LYNX Cloud
Embedded Room Booking	Yes
Whiteboard Annotation	Yes
Email Out Direct From Touchscreen	Yes
Scan QR Code For Saving Work	Yes
Alerts and Announcements	Yes
Over-the-Air Updates	Yes
Remote Management Of Touchscreens (MDM)	Yes - Five year license
NEW CleverLauncher™	Yes
NEW LynxShare™	Yes
NEW LynxCloud™	Yes

Physical Spec

Panel Dimensions	65" 1488 x 908 x 86mm 75" 1709.06 x 1038.75 x 85.7mm 86" 1957 x 1178.42 x 85.7mm
Packed Dimensions	65" 1628 x 208 x 1014mm 75" 1863 x 225 x 1155mm 86" 2110 x 225 x 1304mm
Net Weight	65" 37.90kg 75" 50.25kg 86" 63.90kg
Packed Weight	65" 46.45kg 75" 63.60kg 86" 80.35kg
VESA Mount Point	65" 600 x 400mm 75" 800 x 400mm 86" 800 x 600mm

Inside your Clevertouch Box

What's In The Box	(1) Clevertouch IMPACT Lux (1) 1.5M Length HDMI Cable (1) 3M Length USB cable (A-B) (1) 1.5M USB C Cable (1) 3M Regional Power Cable (1) Remote Control (2) Batteries for Remote Control (2) Super Cool Stylus 2.0 (1) User Guide (1) Quick Install Guide (1) Wireless Adapter 2.0 + WAP
--------------------------	--

Warranty

Warranty term and upgrade options vary by region. Contact your local reseller or distributor for information and visit clevertouch.com/about/warranty

Compliance & Certification

Regulatory Certification	CE, FCC, UL, Energy Star & EEC
---------------------------------	--------------------------------



Statement

Size and weight vary by configuration and manufacturing process, please refer to the actual product. The product images are for illustrative purposes only and may slightly differ in appearance, colour, size, etc. from the actual product. The description, illustrations, etc. in this document may subject to change in accordance with the latest product specification and performance. Should the above-mentioned change in the document become necessary, the document may be updated without written notice.